

# Tellabs® 1000 Multiservice Access Platform iGPE Physical Line Module

## Overview

The Tellabs® 1000 Multiservice Access Platform (MSAP) Integrated Gateway Processing Engine (iGPE) Physical Line Module (PLM) provides Voice Gateway (VGW) functionality to any Tellabs® 1000 MSAP configured as a VGW in the Tellabs® DynamicHome<sup>SM</sup> solution for Gigabit Passive Optical Network (GPON) Fiber-to-the-Premises (FTTP). The Tellabs 1000 MSAP provides flexibility in the access network and the ability to support emerging services, such as Voice over IP (VoIP). The Tellabs 1000 MSAP with the iGPE PLM supports seamless integration for VoIP calls from the Tellabs® 8865 ServiceAware Optical Line Terminal (OLT) or the Tellabs® 1150 MSAP to legacy Class 5 switches, supporting service providers' efforts to transparently leverage existing voice switches while IP-enabling their access network. This incremental migration process enables service providers to provide triple-play services (voice, video and data) cost-effectively.

## Application

The iGPE PLM enables VGW capabilities on the Tellabs 1000 MSAP, providing for protocol and IP/Time Division Multiplexing (TDM) interworking of VoIP calls traversing the Tellabs® 8865 OLT or the Tellabs® 1150 MSAP that are destined to a legacy Class 5 switch utilizing existing switch interfaces, e.g. GR-303, GR-08 and GR-57. In addition, the Tellabs 1000 MSAP, when configured as a VGW, provides a means for facilities-based Unbundled Network Element Loop (UNE-L) unbundling of GPON FTTP voice lines.

## Features

- Support for Session Initiation Protocol (SIP)-enabled voice services from the SIP-capable Tellabs® 1600 Series Optical Network Terminal (ONT)
- Support for all the commonly used legacy Class 5 call features
- Support for GR-303, GR-08 and GR-57 switch interfaces, including simultaneous support of multiple switch interfaces
- Interoperability with leading Class 5 Switches, e.g., the 5ESS® switch, the DMS® switch, the EWSD® switch and the GTD5® switch
- IP-to-TDM interworking
- Support for standard line testing
- 1+1 redundancy
- Echo cancellation per G.168 specifications
- Tellabs 1000 MSAP Gigabit Ethernet network interface support
- Support for voice line unbundling

## Management

The Tellabs 1000 MSAP with the iGPE PLM, when deployed with the Tellabs 8865 OLT, can be managed by the Tellabs® 1090 Network Management System (NMS). When the Tellabs 1000 MSAP with the iGPE PLM is deployed in conjunction with the Tellabs 1150 MSAP, the Tellabs® 1191 NMS can be used to manage both systems.

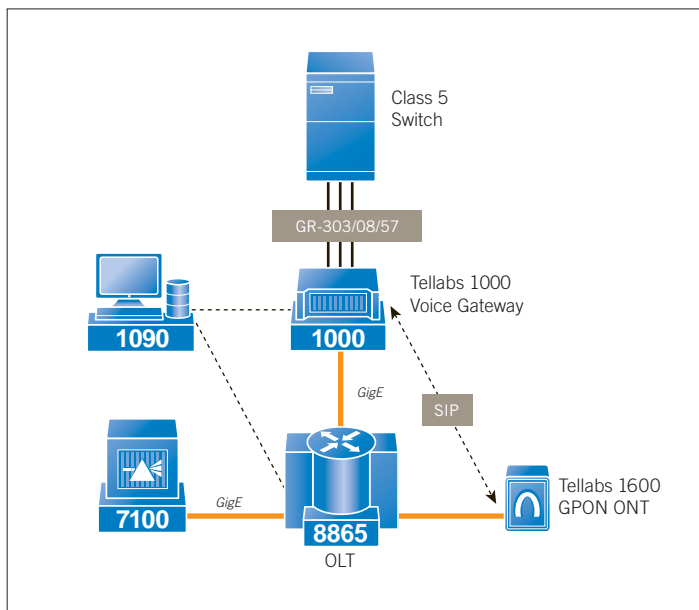


Figure 1. Tellabs 1000® Multiservice Access Platform-enabled Voice Gateway and Tellabs® 8865 ServiceAware Optical Line Terminal

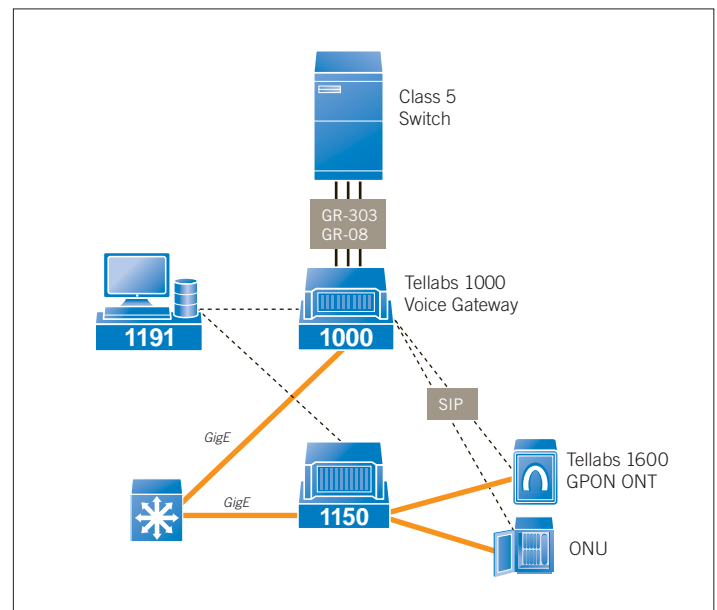


Figure 2. Tellabs 1000® Multiservice Access Platform-enabled Voice Gateway and Tellabs® 1150 Multiservice Access Platform

## Specifications

### Environmental

- Operating temperature: -5° C to +55° C
- Operating humidity: 90% relative humidity; not to exceed 0.024 kg water/kg of dry air
- Storage temperature: -40° C to +70° C
- Storage humidity: 93% relative humidity max at +40° C

### Power

- Maximum power consumption: 7W
- Operating voltage: -48V nominal; +5V input

### Dimensions

- Height: 4.875 in (12.383 cm)
- Width: 0.625 in (1.588 cm)
- Depth: 10.625 in (26.988 cm)

### Weight

- 0.421 lbs (0.191 kg)

### LEDs

- ACTV/STBY — Green: Module in-service and active; Amber: Module in standby mode
- FAIL — Red: Module failed to power-up and boot properly
- SYNC — Unlit: Reserved for future use

### Compliance

- RFC 3261
- GR-303
- GR-08
- GR-57
- GR-909
- UL 60950-1
- CSA 22.2# 60950-1
- NEBS Level 3 (GR-63 and GR-1089 compliant)

### Ordering & Availability

- **Part Number:** 0101-0071

The Tellabs 1000 MSAP iGPE PLM works with Tellabs 1000 MSAP Software Release 11.2. Please contact your Tellabs sales representative or visit [tellabs.com](http://tellabs.com) for more information.

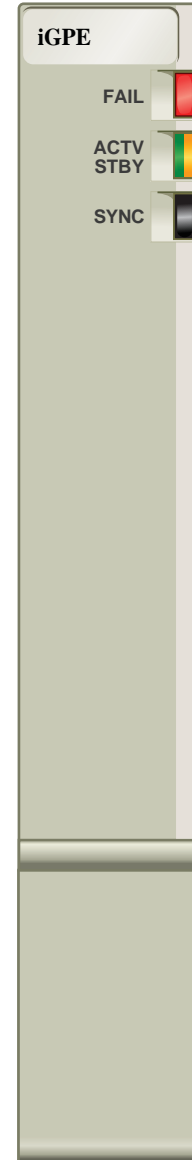


Figure 3. Tellabs® 1000 MSAP iGPE PLM face plate.

#### North America

Tellabs  
One Tellabs Center  
1415 West Diehl Road  
Naperville, IL 60563  
U.S.A.  
+1 630 798 8800  
Fax: +1 630 798 2000

#### Asia Pacific

Tellabs  
3 Anson Road  
#14-01 Springleaf Tower  
Singapore 079909  
Republic of Singapore  
+65 6215 6411  
Fax: +65 6215 6422

#### Europe, Middle East & Africa

Tellabs  
Abbey Place  
24-28 Easton Street  
High Wycombe, Bucks  
United Kingdom  
HP11 1NT  
+44 870 238 4700  
Fax: +44 870 238 4851

#### Latin America & Caribbean

Tellabs  
1401 N.W. 136th Avenue  
Suite 202  
Sunrise, FL 33323  
U.S.A.  
+1 954 839 2800  
Fax: +1 954 839 2828

The following trademarks and service marks are owned by Tellabs Operations, Inc., or its affiliates in the United States and/or in other countries: TELLABS®, TELLABS and T symbol®, and T symbol®. Any other company or product names may be trademarks of their respective companies.

© 2006 Tellabs. All rights reserved.  
74.1720E Rev. A 10/06