

Tellabs® 8600 Managed Edge System

8-Port 10/100BASE-TX Fast Ethernet Interface Module

The Fast Ethernet interface module provides cost-efficient and flexible connectivity.

Overview

The Tellabs® 8600 Managed Edge System consists of a range of modular IP/MPLS-based network elements and an integrated network and service management system.

The 8-port 10/100BASE-TX Interface Module (IFM) is used with Tellabs 8600 system elements, including the Tellabs® 8660 Edge Switch, Tellabs® 8630 Access Switch and Tellabs 8620® Access Switch. The module is mounted on the Interface Module Concentrator (IFC) of the Tellabs 8660/8630 switches or in the Tellabs 8620 switch chassis.

The module is designed for providing access connectivity for Ethernet-port- or VLAN-based Pseudo Wires (PWE3), IP routing and IP VPNs.

Applications

The 8-port 10/100BASE-TX Ethernet IFM can be used in various applications, including IP-VPN-, Ethernet port- and VLAN-based Pseudo Wires, as well as basic interconnection of the devices.

Product description

The 8-port 10/100BASE-TX Ethernet IFM provides the Tellabs 8600 system element with a wire-speed electrical FE interface.

The module is mounted to the IFC or to the Tellabs 8620 Access Switch. An IFC can be equipped with any two modules and then placed in any free slot in the Tellabs 8660 Edge Switch and Tellabs 8630 Access Switch.

The module supports DiffServ-based traffic management and per-VLAN shaping.

Network management

As part of the Tellabs 8600 system, the 8-Port 10/100BASE-TX Ethernet IFM is fully managed with the Tellabs® 8000 Network Manager. All interface and service/connection-level configuration can be done remotely through the Tellabs 8000 manager's GUI-based tools. This is the primary and easiest way to configure the unit and the network.

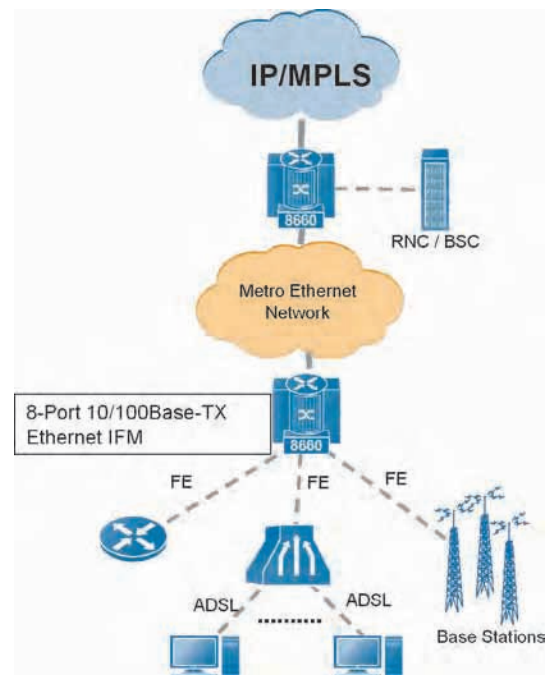
The Tellabs 8000 manager also provides centralized fault and performance monitoring, as well as in-built testing capabilities.

Alternatively, CLI can be used for setting up the parameters for the module. SNMP is supported for monitoring purposes (e.g., for fault and performance management for other systems).

The Tellabs 8000 manager takes care of maintaining full consistency between the network elements and the database.



8-Port 10/100BASE-TX Fast Ethernet IFM



Specifications

Physical Interface

- Eight electrical 10/100BASE-TX interfaces with RJ-45 connectors

Encapsulations

- IPv4/VLAN/Ethernet (RFC 894)
- IPv4/LLC_SNAP/VLAN/Ethernet (RFC 1042)
- IPv6/VLAN/Ethernet (RFC 2464)*
- IPv6/LLC_SNAP/VLAN/Ethernet (RFC 1042)*
- MPLS/VLAN/Ethernet (RFC 3032)

Functionality

- IEEE 802.3 compliant MAC functionality with PAUSE frame support
- 802.1Q VLAN support (4096 VLAN IDs per module)
- IP VPN (RFC 2547bis)
- RFC 4448 Encapsulation Methods for Transport of Ethernet over MPLS Networks
- Port-based and VLAN-based Pseudo Wires
- Maximum frame size of 12000 bytes

Quality of Service

- Strict Priority and Weighted Fair Queuing (WFQ) scheduling
- DiffServ traffic policing with two-rate three-color marker (RFC 2698)
- RED and WRED queue management
- Traffic shaping per VLAN
- DiffServ Aware MPLS traffic engineering (E-LSP and L-LSP)
- Traffic classification based on ingress port, 802.1Q (VLAN), 802.1P (PRI) MPLS EXP, L-LSP, DSCP or L3/L4 header fields
- RSVP-TE CAC with overbooking option

Power Consumption

- Typical: 5.4 W
- Maximum: 9.1 W

Environment

- Storage: ETS 300 019-1-1:2003-04 Class 1.1, temperature: -5°C to 45°C
- Transportation: ETS 300 019 1 2:2003-04 Class 2.3, temperature: -40°C to 70°C
- Normal operating conditions: ETS 300 019-1-3:2003-04 Class 3.2 (non condensing), temperature: -5°C to 45°C , relative humidity: 5% to 95%

Regulations and Standards

- Safety: EN 60950-1:2001
- EMC: EN 300 386:2000 and EN 300 386:2001
- Telecoms: RTTE Directive 1999/5/EC
- NEBS Level 3

Ordering and availability

This is a general-availability product.

For more information, please contact your local Tellabs sales representative or local Tellabs sales office, or see <http://www.tellabs.com/>.

*) For future release

North America

Tellabs
One Tellabs Center
1415 West Diehl Road
Naperville, IL 60563
U.S.A.
+1 630 798 8800
Fax: +1 630 798 2000

Asia Pacific

Tellabs
3 Anson Road
#14-01 Springleaf Tower
Singapore 079909
Republic of Singapore
+65 6215 6411
Fax: +65 6215 6422

Europe, Middle East & Africa

Tellabs
Abbey Place
24-28 Easton Street
High Wycombe, Bucks
United Kingdom
HP11 1NT
+44 870 238 4700
Fax: +44 870 238 4851

Latin America & Caribbean

Tellabs
1401 N.W. 136th Avenue
Suite 202
Sunrise, FL 33323
U.S.A.
+1 954 839 2800
Fax: +1 954 839 2828

The following trademarks and service marks are owned by Tellabs Operations, Inc., or its affiliates in the United States and/or in other countries: TELLABS®, TELLABS and T symbol®, and T symbol®. Any other company or product names may be trademarks of their respective companies.

© 2006 Tellabs. All rights reserved.
74.1737E Rev. A 11/06