

# Tellabs® 8890 Management System

A sophisticated application suite that scales as your network grows.

## Overview

The Tellabs® 8890 Management System is a sophisticated software application suite that provides advanced multiservice network management capabilities. In addition to the standard FCAPS functionalities, the Tellabs 8890 Management System's North Bound Interface (NBI) Gateway, based on the latest CORBA and SNMP standards, provides a fully customizable API for a variety of client options, reporting interfaces, higher level OSS and Service Management Layer connectivity. The Tellabs 8890 Management System Data Collector, in conjunction with the Performance Manager, supports real-time and historical performance and SLA management requirements. The Tellabs 8890 Management System supports carriers that require legacy OSS integration and deployment of solutions starting from the ground up.

## Graphical Network Topology

The Tellabs 8890 Management System is accessible from the Java-based Graphical Network Topology. User administrators can launch the fully functional application from multiple client workstations. This graphical tool simplifies network navigation by using an intuitive map or tree graphical interface to rapidly configure, monitor, and diagnose your network from a single workstation located anywhere in the world.

## Features and Benefits

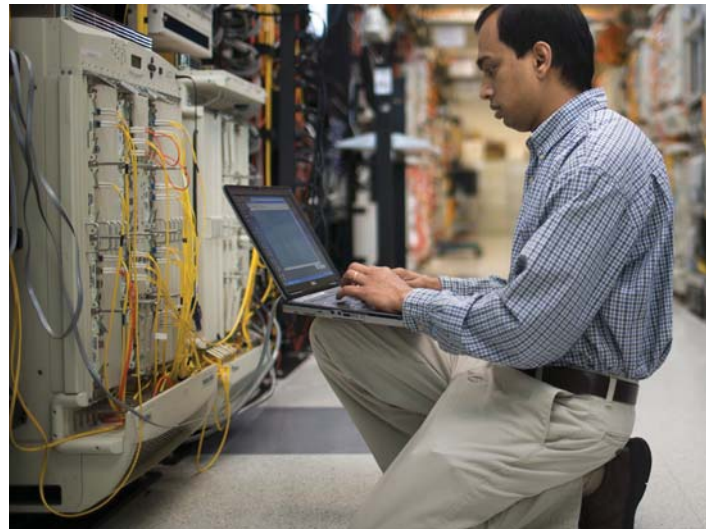
### Correlated Fault Management

The Tellabs 8890 Management System uses SNMP to relay and store faults in the database. A variety of options enables the client to control the display of filtered event information on a per-node, sub-net, or global basis — or by specified severity and status levels.

### Enhanced Service Provisioning

The Tellabs 8890 Management System supports the provisioning of Layer 1, 2, and 3 services, including the following services:

- L1 TDM Circuits
- L2 Circuits such as: ATM (Native, PNNI), Frame Relay, GigE/VLAN, Martini PPP, HDLC
- L2 Transparent Bandwidth Services (ATM, GigE, PPP, Private Line and TDM)
- L2 Interworking (Service-IWF, Ethernet-IWF, PNNI/MPLS)
- L2 VPN Services (VPLS, VLAN)
- L3 VPN Services (2547bis)
- Redundant Label Switched Paths (LSPs)
- Traffic Engineering Tunnels
- Quality of Service (802.1p support)



Tellabs® 8890 Management System

Service templates are available to facilitate service creation. Configuration mechanisms are also available for establishing new configuration service parameters if greater levels of control granularity are required. Customer information links to a provisioned service automatically. The NBI Manager imports External bulk provisioning sources into the Tellabs 8890 Management System database.

### Flexible NBI Manager

The NBI Manager provides all gateway requests between the Tellabs 8890 Management System server, clients and external data sources. Service layer applications such as Flow-through Provisioning, Inventory Manager or Billing Systems can connect to the Tellabs 8890 Management System from the NBI Manager. The NBI Manager is based on TeleManagement Forum standards, but is also fully customizable to meet individual service provider requirements or other interface languages such as XML.

### MPLS Traffic Engineering

The Tellabs 8890 Management System supports powerful network traffic engineering capabilities that enable service providers to create Logical Service Networks using MPLS-based technologies. Traffic-engineered bandwidth parameters establish Explicit and dynamic Label Switched Paths (LSPs) in a simple, end-to-end and point-and-click operation. Automatically adjusted bandwidth allocation reduces bandwidth management costs.



### Integrated Element Management

Element Management System (EMS) functions are available through a simple point-and-click operation from the network map. A full view of Tellabs® 8800 Multiservice Router (MSR) Series nodes are displayed with their current configurations of Universal Line Card, Physical Line Module, Port, Channel, Layer 2 and Layer 3 Interfaces. Full inventory information is also easily accessible. Additionally, the element manager supports remote software download, configuration backup, and restore functionality.

### Service-Guaranteed Discovery Management

Discovery of physical devices and their configuration, as well as discovery of logical services, is supported. Hooks are provided for integration with inventory management applications.

### Network Troubleshooting and Isolation

The Tellabs 8890 Management System provides tools, such as enable/disable ATM, OAM, AIS, and extensive logging information, to aid in troubleshooting and isolation of network problems.

### Extensive Collection of Statistics

Real-time monitoring and historical performance statistics are available for services and physical equipment. Data Collectors can be distributed throughout the network for archival of historical performance data gathered from Tellabs 8800 MSR nodes using FTP at predefined intervals. Easy-to-use APIs transfer the collected data to the customer billing system.

### Classified Security & Access Control

Security access control is configured on a per-user basis. Multiple levels of access authorization and authentication are supported to meet the security requirements of different organizations.

### Seamless Software Upgrade

The Tellabs 8890 Management System provides a simple and seamless software upgrade mechanism that requires minimal intervention for minor release upgrades and a simple upgrade process for major releases. The client software upgrade process is truly scalable and is accomplished by automatic software downloads from a remote support location.

### High Scalability

The Tellabs 8890 Management System client-server management system scales to support large service provider networks and can be extended to support third-party vendor equipment.

### Specifications

#### Trusted Reliability

Reliability is assured with the industry standard SUN® Solaris® OS and Oracle® database running at the server level. The Tellabs 8890 Management System offers configurations with backup database support that enables the establishment of a secondary Tellabs 8890 Management System in a backup network operations center.

- Supported Client Platforms
  - Windows® 2000 Professional
  - Windows® NT Workstation SP6
  - Solaris® 8 on Sun® Sparc®
- Minimum Client Requirements
  - Intel Pentium III 1.4 GHz, 256 KB Cache
  - 1 GB RAM, 1 GB Swap, 1 GB Disk, 24-bit color, 10/100 Ethernet
  - Sun Blade 150 Workstation (550 MHz UltraSPARC III, 512 KB Cache, 2 GB RAM, 160 GB Disk, 24-bit color, 10/100 Ethernet)
- Supported Server Platforms
  - Solaris 8 on Sun SPARC
- Minimum Server Requirements
  - Sun Fire 280R Server
  - 1.2 GHz UltraSPARC II
  - 4 GB RAM, 4 GB Swap
  - 73 GB Disk
- Tellabs 8890 Database
  - Oracle 8i (8.1.7) Enterprise Edition for Solaris

#### North America

Tellabs  
One Tellabs Center  
1415 West Diehl Road  
Naperville, IL 60563  
U.S.A.  
+1 630 798 8800  
Fax: +1 630 798 2000

#### Asia Pacific

Tellabs  
3 Anson Road  
#14-01 Springleaf Tower  
Singapore 079909  
Republic of Singapore  
+65 6215 6411  
Fax: +65 6215 6422

#### Europe, Middle East & Africa

Tellabs  
Abbey Place  
24-28 Easton Street  
High Wycombe, Bucks  
HP11 1NT  
United Kingdom  
+44 871 574 7000  
Fax: +44 871 574 7151

#### Latin America & Caribbean

Tellabs  
Rua James Joule No. 92  
EDIFÍCIO PLAZA I  
São Paulo – SP  
04576-080  
Brasil  
+55 11 3572 6200  
Fax: +55 11 3572 6225

The following trademarks and service marks are owned by Tellabs Operations, Inc., or its affiliates in the United States and/or in other countries: TELLABS®, TELLABS and T symbol®, T symbol®, and SMARTCORE®. Statements herein may contain projections or other forward-looking statements regarding future events, products, features, technology and resulting commercial or technological benefits and advantages. These statements are for discussion purposes only, are subject to change and are not to be construed as instructions, product specifications, guarantees or warranties. Actual results may differ materially. The information contained herein is not a commitment, promise or legal obligation to deliver any material, code, feature or functionality. It is intended to outline Tellabs' general product direction. The development, release and timing of any material, code, feature or functionality described herein remains at Tellabs' sole discretion.